



## TREATMENT MENU

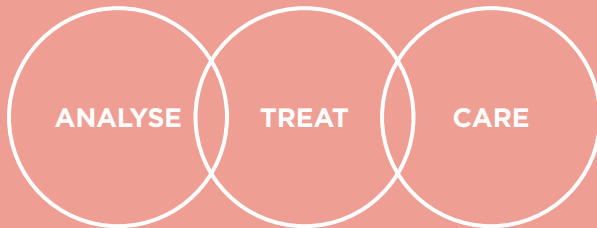
**LIPOSLIM**  
LASER BODY BEAUTY

3IN1

# BE YOUR OWN KIND OF BEAUTIFUL

---

With our Advanced slimming, Flawless skin  
and Permanent Laser Hair Removal



## ADVANCED SLIMMING

Look Good, Feel Good.

# LIPOSCULPT

Love handles, meet your match.

LipoSculpt is a nutricosmetic range of weight management products. The range provides beauty, health and weight loss benefits and helps you to take better care of your body – deeply and holistically. Our innovative combination of high-quality products redefines weight management. The powerful natural ingredients deliver both internal and external solutions. Our products are scientifically formulated to promote overall health, gut health and combat weight, cellulite and water retention and support spot fat reduction. LipoSculpt treats the core of your individual weight loss challenges. Supporting you to finally achieve your weight loss goals. LipoSculpt provides an effective weight management solution with proven, visible and lasting results.

## LIPOSCULPT RANGE

Thermo Gel (200ml)	R 930
Slimming Effervescent (150g)	R 530
Detox Balance (300ml)	R 530
Detox Caps (90caps)	R 695

Slimming Whey Protein Shake	R 940
CLA (90caps)	R 430
Hormonal Balance (90caps)	R 750
Exfoliating Body Sponge	R 90

## BODY SETS

### DETOX SET

R1 210

Detox Balance  
Detox Caps  
Exfoliating Body Sponge



### SHAPE SET

R2 720

Thermo Gel  
Detox Balance  
Detox Caps  
Hormonal Balance  
Body Exfoliating Sponge



### ESSENTIAL SET

R1 350

Detox Caps  
Hormonal Balance



### BODY EXCLUSIVE BAG

R4 400

Beach Bag  
BMI measuring tape  
Slimming Whey Protein Shake & Shaker  
Exfoliating Body Sponge  
Slimming Effervescent  
Hormonal Balance  
Thermo Gel  
Detox Balance  
Detox Caps  
CLA

### META BOOST SET

R1 420

Thermo Gel  
Slimming Effervescent  
Exfoliating Body Sponge



### ANTI-CELLULITE SET

R2 070

Detox Balance  
Detox Caps  
Thermo Gel  
Exfoliating Body Sponge



## SLIMMING TREATMENTS

Our 3-STEP Slimming Concept — Analyse, Treat, Care — combines modern body analysis, non-invasive laser based treatments, lymphatic body reset treatments and infrared therapy for targeted fat loss. We create personalised plans, celebrate real results, and support long term success with LipoSculpt home care and meal plans.

### **INBODY SCAN - R150**

1 Test. 100% You. Understand your weight, track your progress and reach your goal with this innovative technology.

### **HEALTH ASSESSMENT WITH INBODY SCAN - R550**

Our comprehensive health assessment includes medical history review, lifestyle evaluation, modern body analysis to analyse body fat, muscle mass, visceral fat and metabolism, giving you a clear understanding of your body composition. Based on your results, we provide a customised weight loss plan tailored to your goals, ensuring a science-backed approach to effective weight management.

### **INFRARED THERAPY - R480**

Infrared therapy promotes fat loss, enhanced detoxification, and improved circulation, stimulates the lymphatic system and enhancing your body's natural ability to burn 600 calories in 30min. Excellent for pain relief therapy. The treatment is completed with LipoSculpt Thermo Gel (30ml) as aftercare for optimal results.

### **SCULPSURE – NON-INVASIVE FAT REDUCTION & BODY CONTOURING - R1 890**

SculpSure is a laser-based, non-invasive lipolysis treatment designed to permanently destroy fat cells in just 25 minutes. This advanced technology targets stubborn fat, enhancing body contours without surgery or downtime—just visible, lasting results. The treatment is completed with LipoSculpts Thermo Gel (30ml) as aftercare for optimal results.

### **RF SKIN TIGHTENING – LIFT & FIRM - SMALL R990 | MEDIUM R1 190 | LARGE R1 390**

Radiofrequency (RF) treatment stimulates collagen and elastin production, tightening loose, sagging skin while improving firmness and elasticity. This non-invasive treatment smooths finelines, reduces wrinkles, and contours the face or body for a lifted, youthful appearance. Experience firmer, rejuvenated skin with no downtime and visible results over multiple sessions

### **LYMPHATIC BODY RESET - R1 490**

This detoxifying treatment boosts circulation, lymphatic drainage, and toxin removal for a lighter, more sculpted body. It includes dry body sponging, lymphatic massage, and a RF Treatment (medium) to reduce water retention, improve skin tone, and enhance metabolism. The treatment is completed with LipoSculpt Thermo Gel (30ml) as aftercare for optimal fat-burning results.

### **SLIMMING BODY WRAPS - R600**

Boost your cm loss and detoxification with our LipoSculpt Slimming Body Wraps. Choose Thermo Gel for enhanced fat burning and cm loss, or Detox Balance body oil to reduce water retention and inflammation. This treatment improves circulation, firms skin, and accelerates detox, leaving you feeling lighter and more sculpted. The treatment is completed with LipoSculpts Thermo Gel (30ml) as aftercare for optimal results.

### **FARADIC & EMS BODY TONING R170**

Faradic (EMS) uses electrical pulses to stimulate deep muscle contractions, mimicking an intense workout. It firms, tones, and sculpts targeted areas while boosting fat loss, circulation, and cellulite reduction. This non-invasive treatment enhances muscle definition and metabolism, delivering visible results in just a few sessions

## ADVANCED SLIMMING

Look Good, Feel Good.

### WEIGHT LOSS PACKAGES

#### TRIM & TONE WEIGHT LOSS R5 490

Inbody scan  
Infrared treatments x 8  
Lymphatic Body Reset x 1  
SculpSure treatments x 1

#### ULTIMATE WEIGHT LOSS R11 990

Inbody scan  
Infrared treatments x 12  
Lymphatic Body Reset x 1  
SculpSure treatments x 4  
Body Shape Set x 1

#### LIPOSLIM CELLULITE SOLUTION

R7 990  
Inbody Scan  
Lymphatic Body Reset x 6  
Infrared Treatments x 6  
Anti-Cellulite Set x 1

#### ADVANCE TARGETED WEIGHT LOSS

R18 490  
Inbody scan  
Infrared treatments x 20  
Lymphatic Body Reset x 2  
SculpSure treatments x 6  
Body Exclusive Bag x 1

#### WEIGHT LOSS ACCELERATOR

R7 990  
Inbody scan  
Infrared treatments x 12  
Lymphatic Body Reset x 1  
SculpSure treatments x 2

#### EXCLUSIVE LIPOSLIM 3IN1 WEIGHT LOSS

R26 490  
Inbody scan  
Infrared treatments x 26  
Lymphatic Body Reset x 2  
SculpSure treatments x 10  
Body Wraps x 10  
Body Exclusive Bag x 1



## FLAWLESS SKIN

Natural. Beautiful. **You.**

# MICROSKIN

Mother Nature **Approved.**

Put your best face forward and prolong the effects from your treatment with our advanced Microskin Cosmeceutical Skincare Range. The MicroSkin range is scientifically formulated to provide the most advanced care and nourishment to promote a healthy complexion. Now with added peptides and active ingredients to stimulate collagen production.

## MICROSKIN RANGE

### CLEANSERS & TONERS

Cleansing Wash	R 390
Cleansing Solution	R 390
Balancing Toner	R 390

### TREATMENTS

Daily Flawless	R 530
Daily Clear Skin	R 530
Flawless Serum	R 920
Firming Neck & Bust Cream	R 570
Vita Boost Serum	R 660
Eye Care	R 660

### SUN CARE

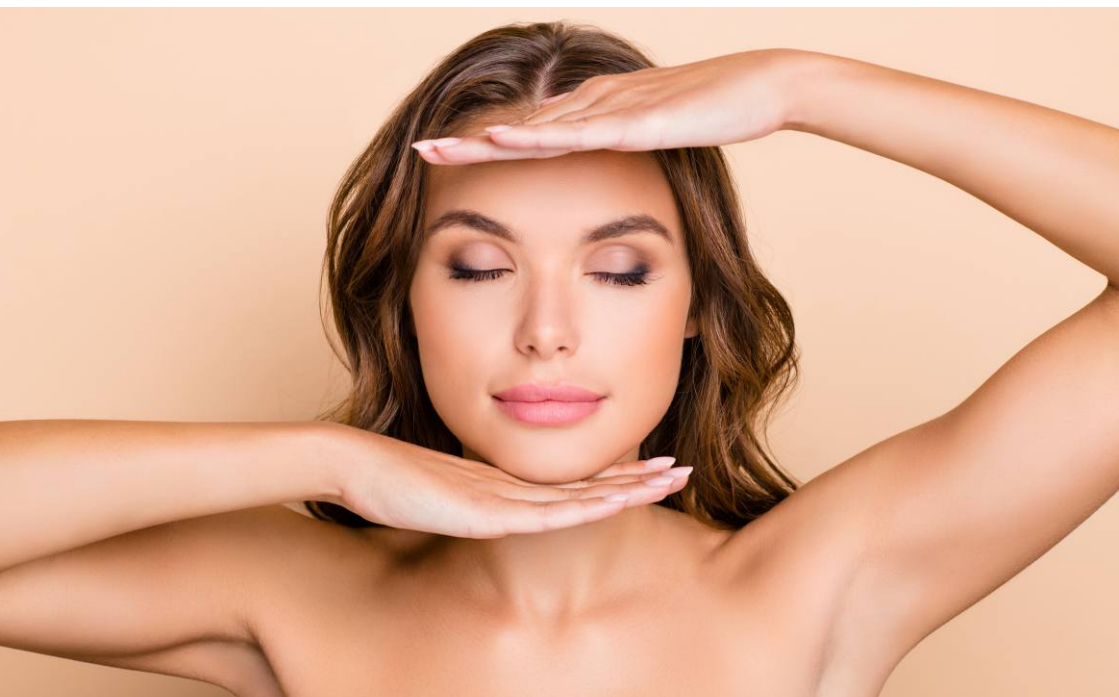
Sun Care	R 700
----------	-------

### MOISTURISER

Ultra-firm	R 680
Balancing Gel	R 680
Flawless Nourish	R 660
Advanced Night Repair	R 660

### MASKS & EXFOLIATORS

Medi Exfoliating Cream	R 600
Medi Gel Mask	R 550



# FLAWLESS SKIN

Natural. Beautiful. You.

## MICROSKIN SETS

### DAILY VITALITY SET

#### R2 100

Cleansing Wash  
Medi Gel Mask  
Vita Boost Serum  
Ultra Firm



### ACNE SET

#### R2 200

Cleansing Wash  
Balancing Toner  
Medi Gel Mask  
Balancing Gel  
Daily Clear Skin



### PIGMENTATION SET

#### R2 700

Cleansing Solution  
Balancing Toner  
Medi Gel Mask  
Daily Flawless  
Flawless Nourish  
Eye Care



### ANTI-AGING SET

#### R3 000

Cleansing Solution  
Balancing Toner  
Medi Gel Mask  
Flawless Nourish  
Vita Boost Serum  
Eye Care



## ADVANCED SKIN TREATMENTS

### ADVANCED SKIN ANALYSIS AND MICROSKIN SAMPLE SET - R400

Reveal your skin's true condition with our Advanced Skin Analysis. This in-depth skin scan detects 10 key skin concerns, providing instant, accurate results. Includes a basic cleanse to refresh your skin and a MicroSkin Sample Set, helping you start a targeted skincare journey for a healthier, more radiant complexion.

### MICROLASER FACIAL - DEEP CLEAN & HYDRATE 45min - R750

MicroLaser deeply cleanses, exfoliates, and hydrates, leaving your skin refreshed, radiant, and smooth. It unclogs pores, removes impurities, boosts hydration, and reduces fine lines for an instant glow. Perfect for all skin types, delivering visible results after one session with no downtime. Your skin, renewed!

### MICROLIGHT 20min - R390

MicroLight is LED (Light Emitting Diode) Phototherapy that utilises clinically proven wave lengths to accelerate the rejuvenation of the skin by boosting collagen and elastin production.

## SPECIALISED SKIN TREATMENTS

### PURE SKIN FACIAL - CLEAR, HEALTHY SKIN - R690

Designed for acne-prone skin, the Pure Skin Facial deeply cleanses, extracts impurities, and reduces breakouts. Featuring MicroLight LED therapy, extractions, and High Frequency, it kills acne-causing bacteria, calms inflammation, and promotes healing. Expect clearer, smoother, and healthier skin with a visibly refined complexion after just one session. The treatment is completed with MicroSkin Sample Set for optimal results.

# FLAWLESS SKIN

Natural. Beautiful. **You.**

## LUMINOUS SKIN FACIAL - YOUTHFUL, RADIANT GLOW - R1 400

The Luminous Skin Facial is an advanced anti-aging treatment that boosts collagen, firms skin, and reduces fine lines. Combining a MicroLaser facial, solution mask, and MicroSkin Vita Boost Serum, it deeply hydrates, rejuvenates, and restores radiance for a smoother, firmer, and more youthful complexion with a visible glow.

## EVENTONE RADIANCE FACIAL - BRIGHTEN & EVEN SKIN TONE - R1 850

Target pigmentation, uneven skin tone, and dullness with the EvenTone Radiance Facial. This advanced treatment combines a MicroLaser facial, MicroSkin Chemical Peel, and Medi Gel Mask to reduce dark spots, boost collagen, and reveal a brighter, more even complexion for radiant, youthful-looking skin with lasting results.

## DERMAPLANING WITH MICROLIGHT LED - SMOOTH & GLOW - R800

This exfoliating treatment gently removes dead skin cells and fine hair, leaving your skin ultra-smooth, brighter, and more radiant. The added MicroLight LED therapy boosts collagen production, reduces inflammation, and enhances skin healing. Completed with a MicroSkin Sample Set, ensuring optimal hydration and a glowing, refreshed complexion.

## ADD - ON TREATMENTS

SOLUTION FOCUSED MASK R 150

EXTRACTIONS R 100

HIGH FREQUENCY R 150

BROW SHAPE & TINT R 220

BROW SHAPE R 110

# MICRONEEDLING

Boost your skin's natural production of collagen and elastin with collagen induction therapy. Experience toned, firmer and visibly improved skin condition. This aesthetic treatment addresses specific concerns such as hyper pigmentation, scarring, stretchmarks and the effects of skin aging. You will see remarkable results! Each microneedling treatment is done in combination with a MicroLight treatment. This value - add combination means visible results sooner!

## TREATMENT AREAS

Face R 1 540

Face & Neck R 1 760

Face, Neck & Decollete R2 090

## MICRONEEDLING TREATMENT/AREA SEGMENTS (STRETCHMARKS, SCAR TREATMENT)

Small R 990

Large R 1 540



## FLAWLESS SKIN

Natural. Beautiful. You.

## CHEMICAL PEELS

You can now further enhance your skin's tone and texture.

MicroSkin Chemical Peel	R 750
Skin rejuvenation peel 30   30 - 30min Treatment	R 830
Retinol peel - 30min Treatment	R 1 650
Quadracton retinol peel package	R 4 900

## AESTHETIC SKIN TREATMENT PACKAGE

Lets get serious about results and restore, renew and reverse existing damage in your skin.

### SKIN REVITALISATION PACKAGE

**R5 500**

Improve complexion, firmness, texture and overall skin quality

Advanced Skin Analysis

3 x Chemical peels

3 x Microneedling treatments

3 x LED Microlight therapies

The treatment is completed with MicroSkin Vita Boost Serum as aftercare for optimal results.



# PERMANENT LASER HAIR REMOVAL

Smooth. Beautiful. **You.**

## PERMANENT LASER HAIR REMOVAL

Hair today. **Gone tomorrow.**

### Don't expect any regrowth.

Experience the latest in effective Permanent Laser Hair Removal. We use advanced technology that eliminates hair regrowth and works on all skin types and hair colours with sure-fire results. Our unique dual laser system delivers customised results and effectively destroys follicles without harming your skin. Gentle no discomfort. Results within 6-10 Sessions.

Recieve 10% off when you purchase a course of 6 sessions, 15% off a course of 8 sessions and 20% off a course of 10 or 12 sessions.

	LADIES	GENTS
<b>FACE</b>		
Chin   Uni brow   Top brow   Upper lip	R 330	R 390
Sideburns   Forehead   Cheeks Neck (Front/Back)	R 350	R 430
Full Beard (incl. Neck)	R 840	R 1120
Full Face	R 1210	R 1540
<b>BIKINI (Incl. extended)</b>		
Sides & tops   buttocks (incl. cheeks)	R 720	
Brazilian	R 950	
Hollywood	R 1150	
<b>ARMS</b>		
Hands (Incl. fingers)	R 350	R 390
Lower Arms   Upper Arms (Incl. elbows)	R 990	R 1540
Underarms	R 610	R 710
Full Arms	R 1650	R 1980
<b>LEGS</b>		
Feet (Incl. toes)	R 350	R 390
Lower Legs   Upper Legs (Incl. knees)	R 1950	R 2420
Full Legs	R 2800	R 3400
<b>BACK &amp; FRONT</b>		
Nipples   Belly Button Path   Mini Lower Back	R 300	R 350
Shoulders	R 790	R 1030
Lower   Upper Back   Chest   Tummy	R 1320	R 1650
Full Back	R 1930	R 2970



**SAY GOODBYE TO UNWANTED HAIR**  
EXPERIENCE PERMANENT LASER HAIR REMOVAL!

# LIPOSLIM

LASER BODY BEAUTY



## LIPOSLIM 3IN1 SOUTHDOWNS

010 023 2215 | 066 262 2780 | southdowns@liposlim3in1.co.za  
Shop 22, Southdowns Shopping Centre, Centurion

[www.liposlim3in1.co.za](http://www.liposlim3in1.co.za)